



**Faculty of Biological Science and Technology**  
**Zoology and Botanical Department**  
**Practical Embryology**

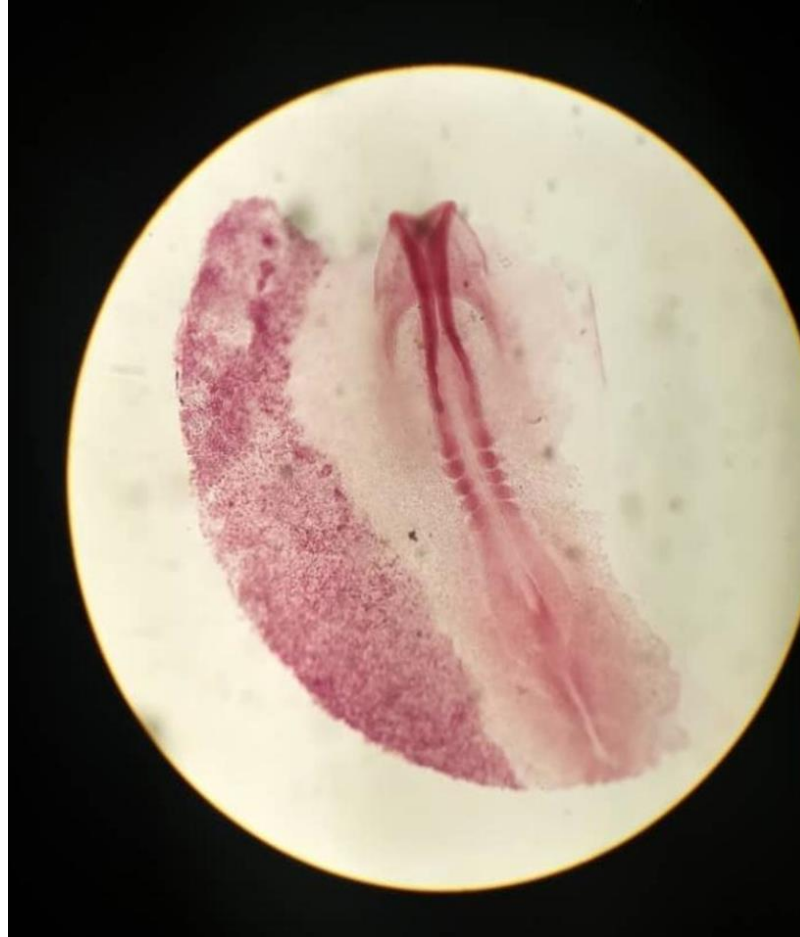
# **Bird Development**

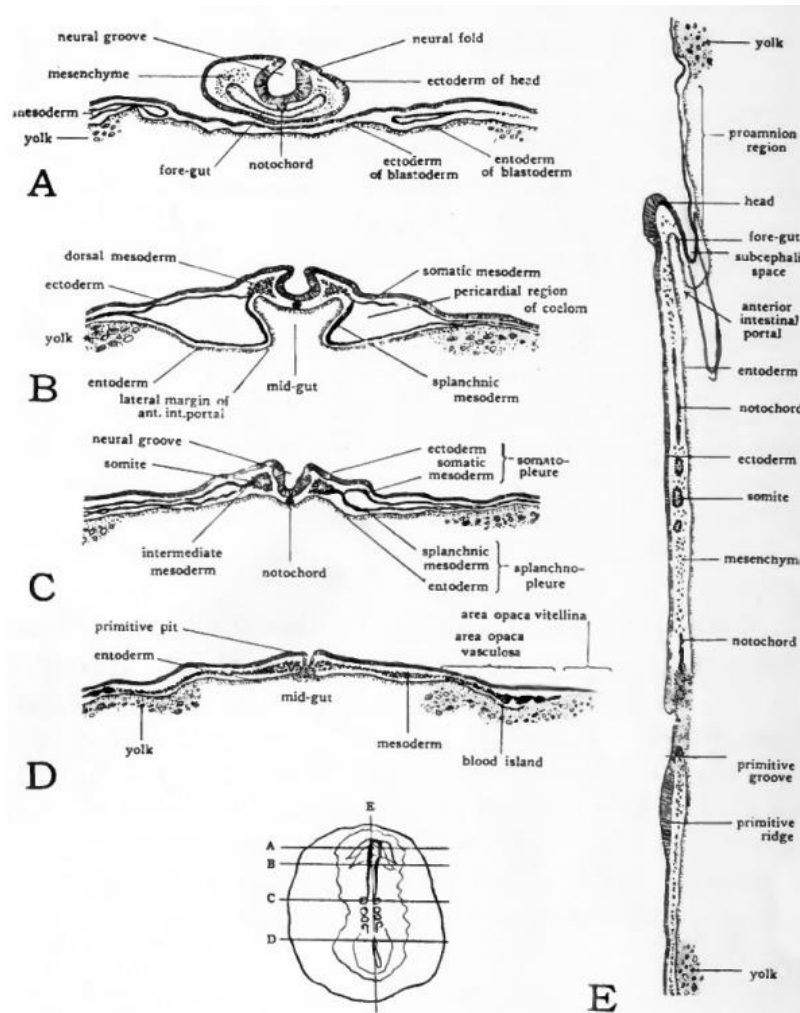
**(24 hours chick embryo; cross and sagittal sections)**

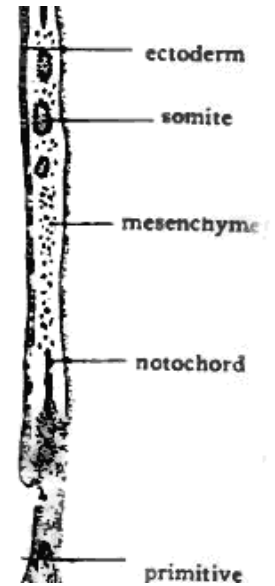
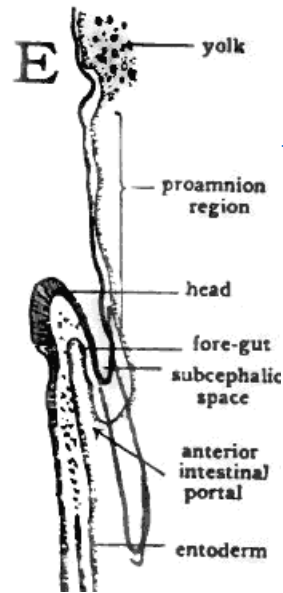
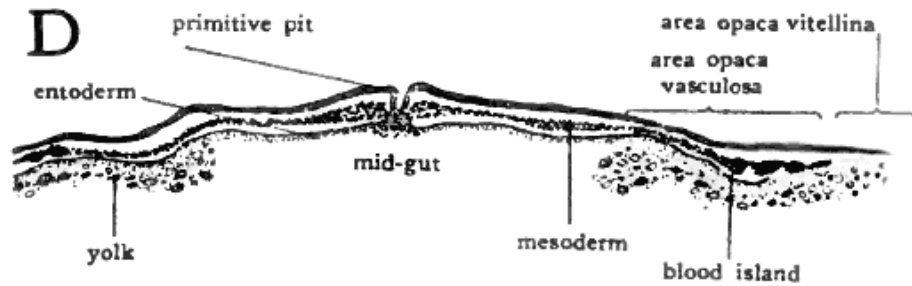
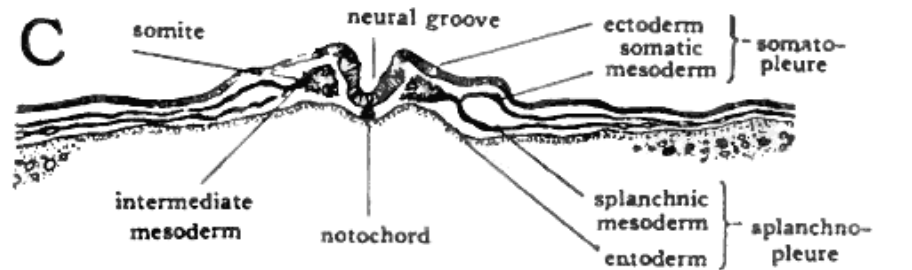
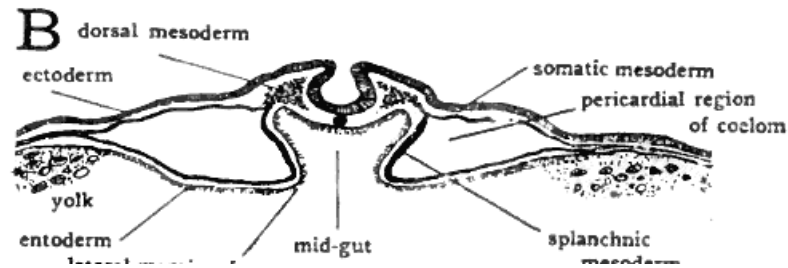
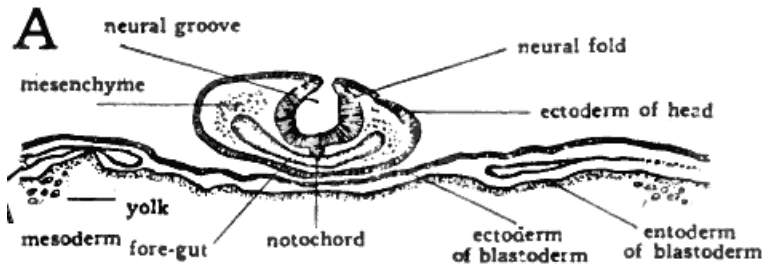
**By: Shirin Kashfi**  
**Ph.D in Animal Development**  
**Sh.kashfi@staf.ui.ac.ir**

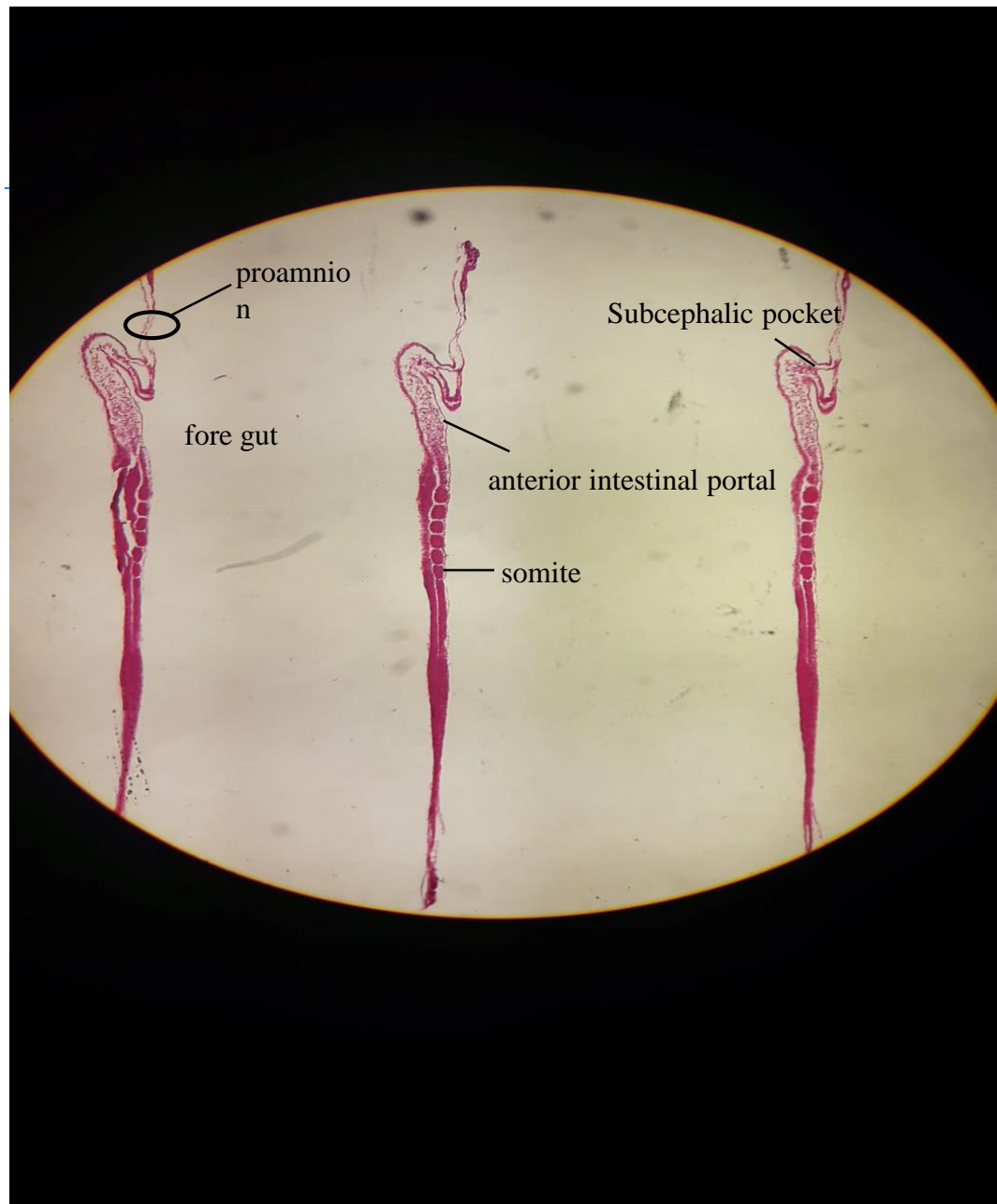


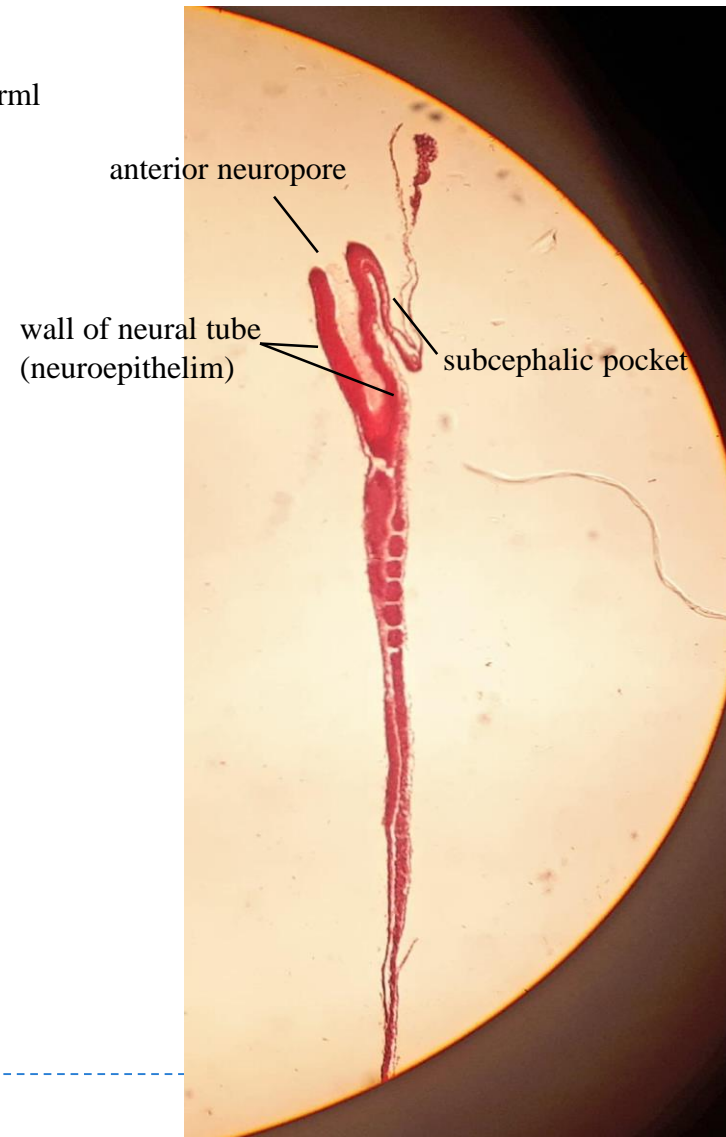
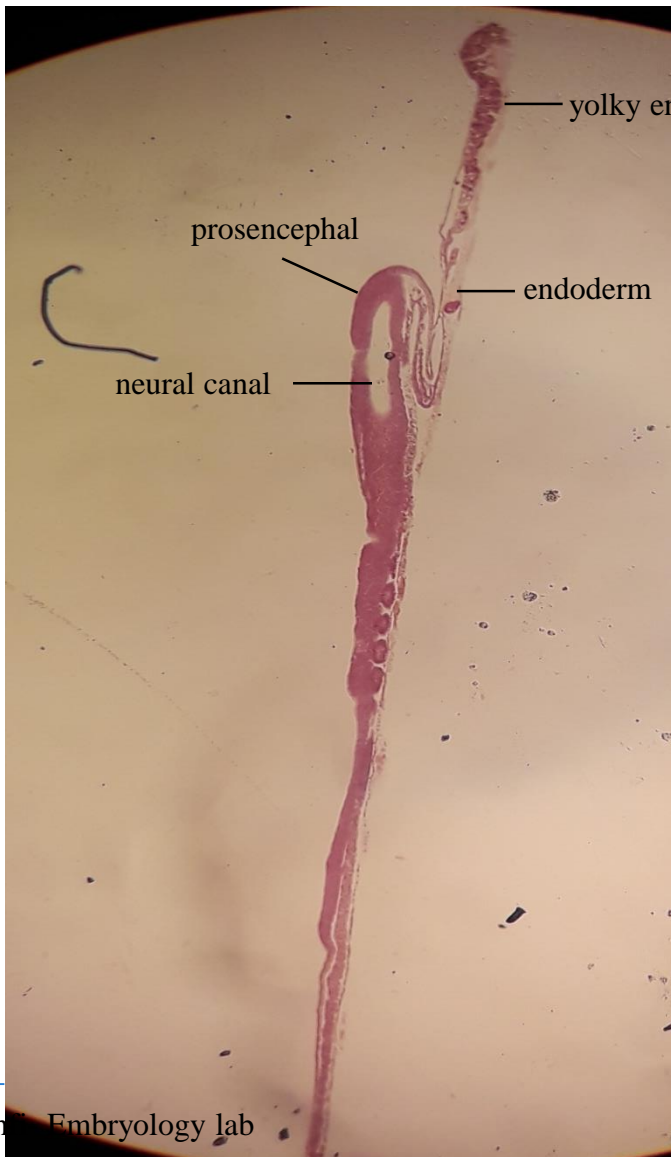
## Chick embryo 24 hours



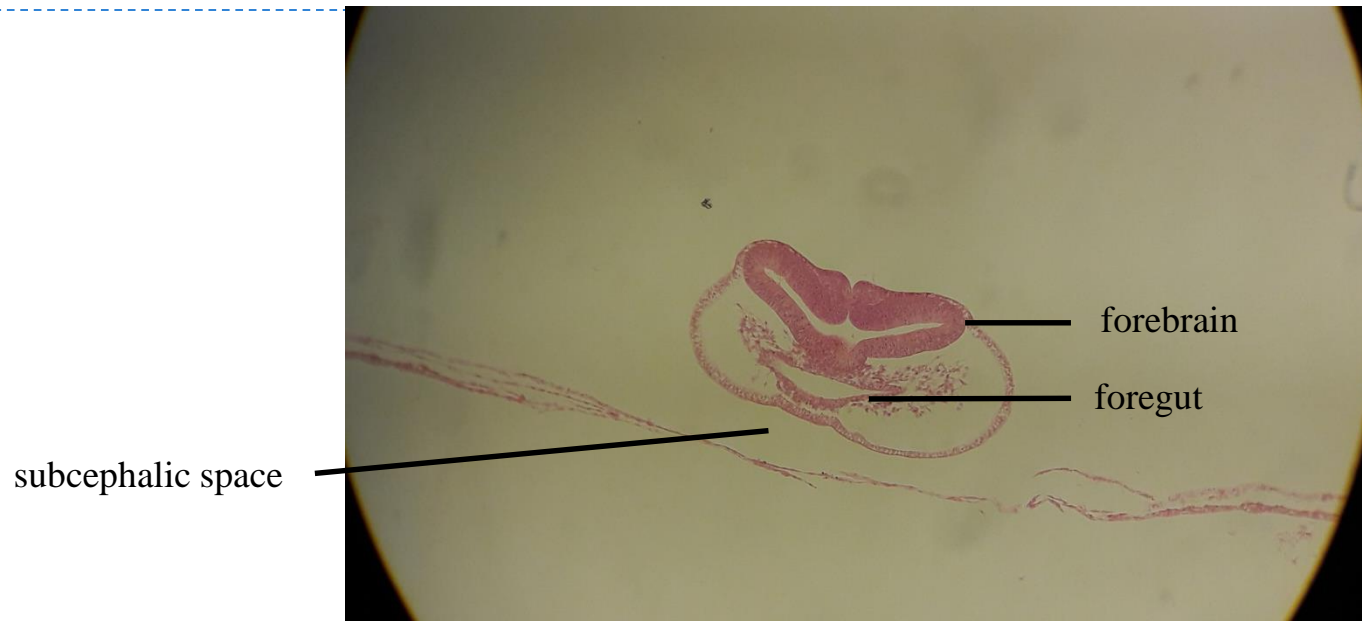


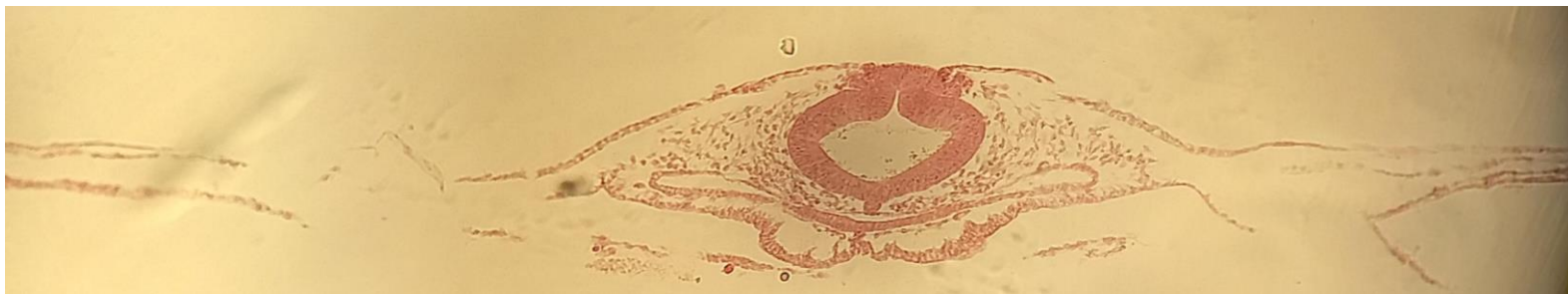
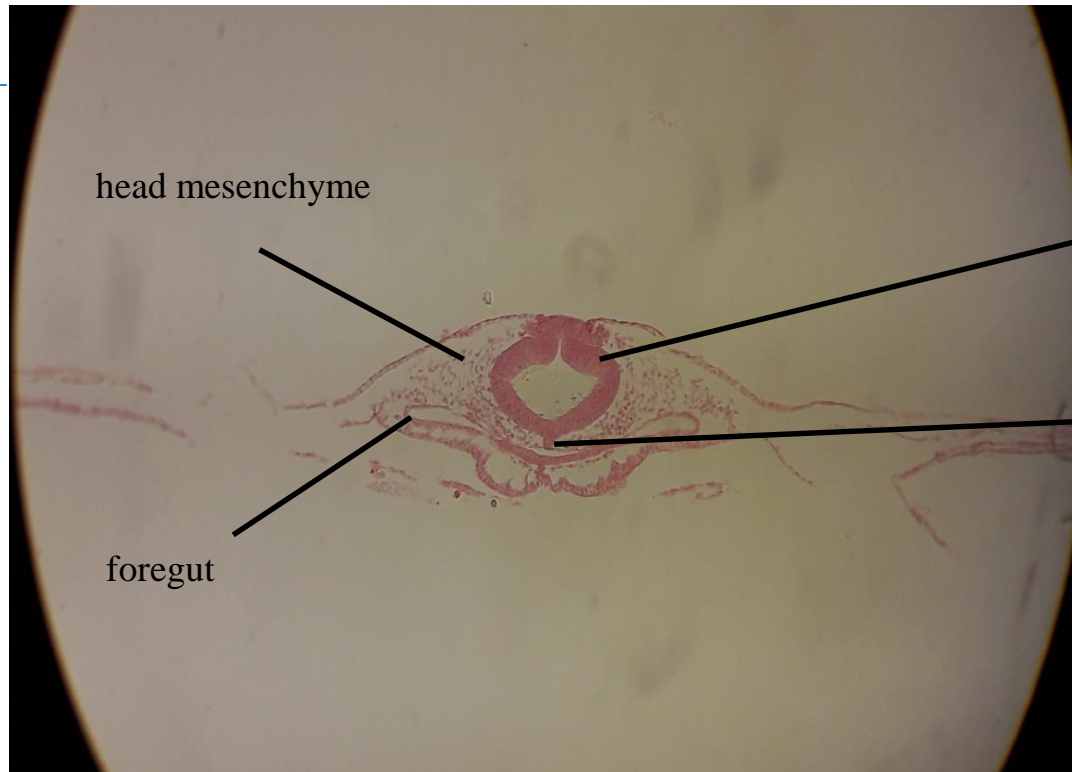




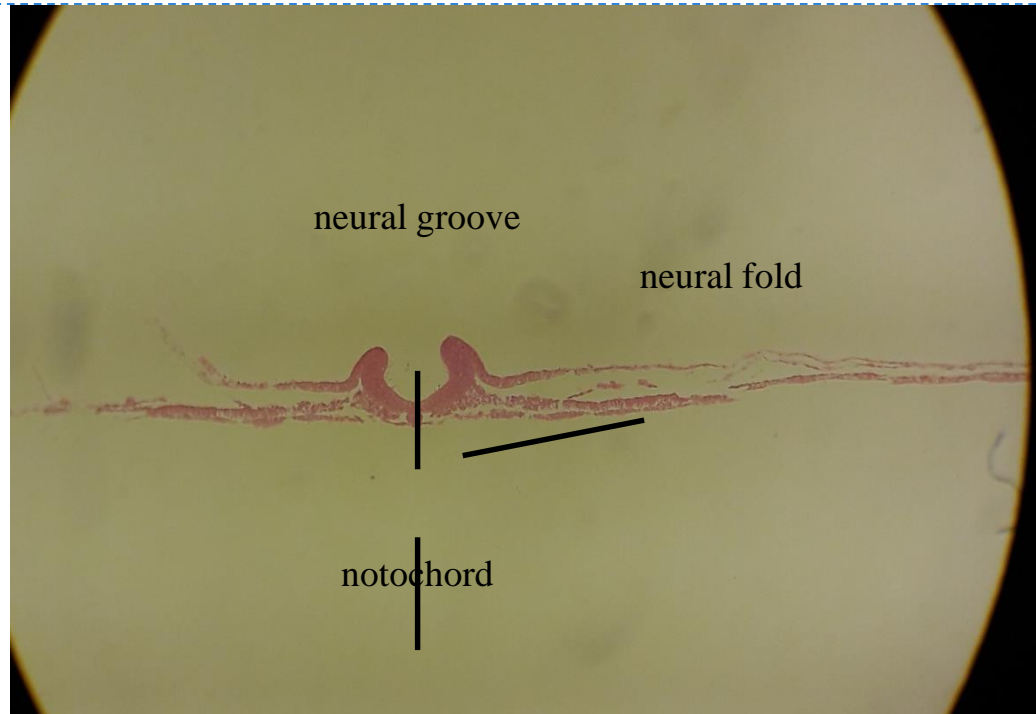


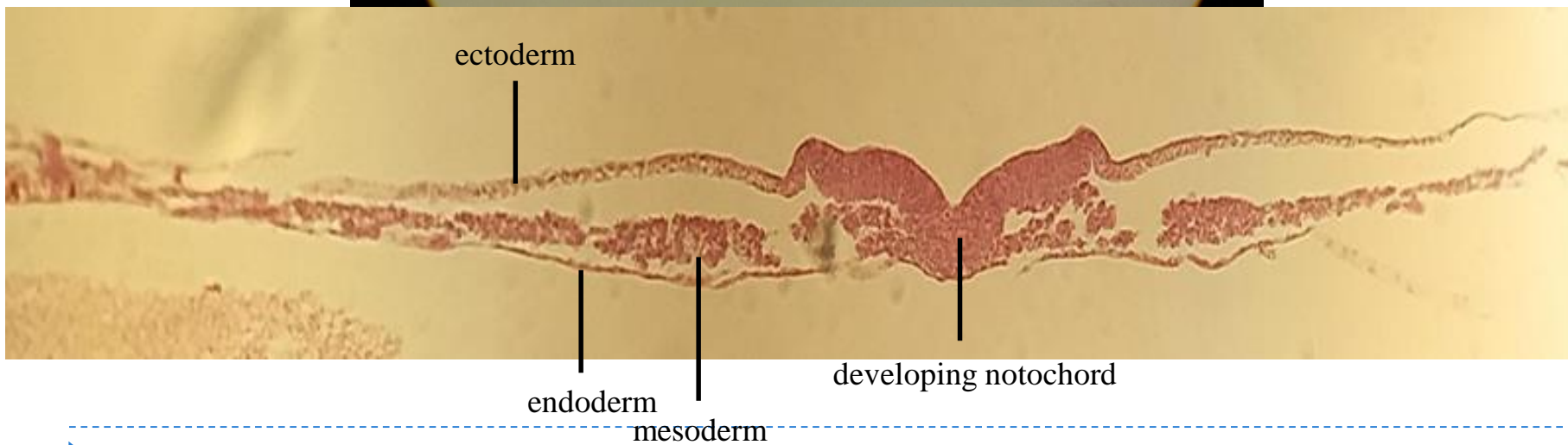
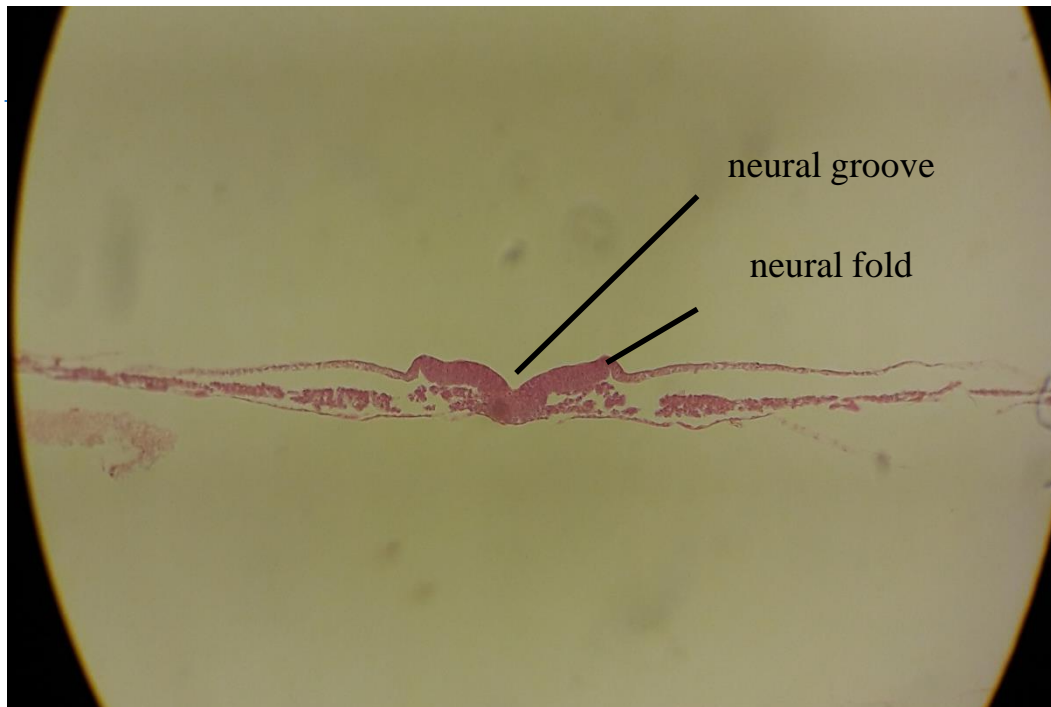








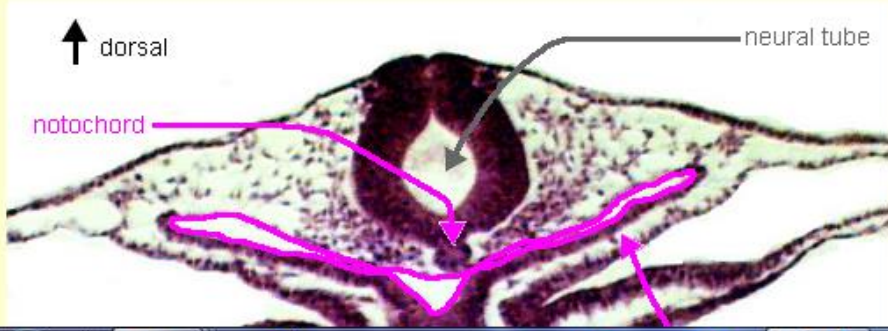






# 24-hour Chick Embryo Transverse Sections

Label Section



<http://www.tulane.edu/~embryo/24hrChick/24hrChick.htm>