



**Faculty of Biological Science and Technology**  
**Zoology and Botanical Department**  
**Practical Embryology**

**نورولاسیون در دوزیستان (قورباغه)**  
**Neurulation in Amphibian (frog)**

**By: Shirin Kashfi**  
**Ph.D in Animal Development**  
**Sh.kashfi@staf.ui.ac.ir**




















## نورولاسیون (Neurulation)

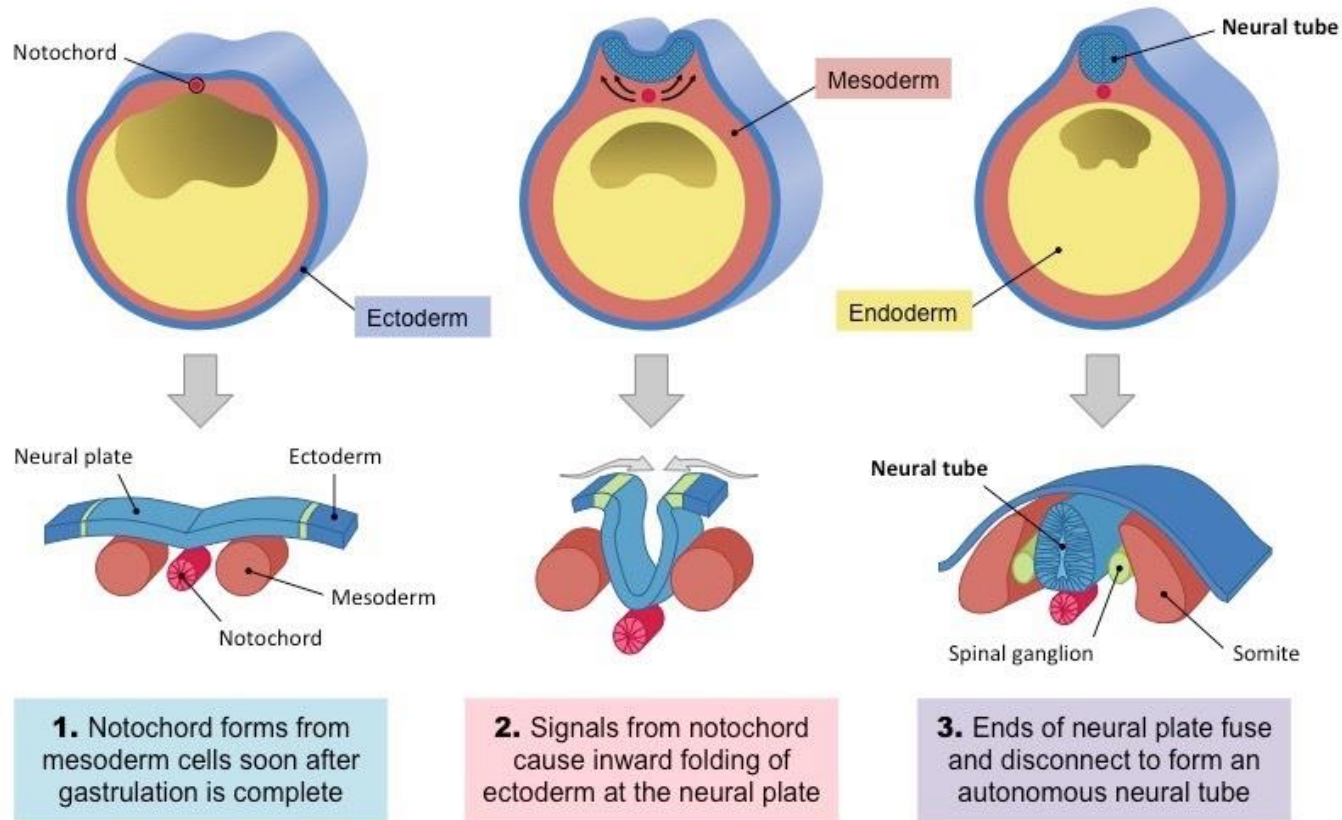
- ▶ نورولاسیون اشاره به فرآیندهای خاصی دارد که در طی آن سیستم عصبی در مهره داران به وجود می آید
- ▶ دو نوع نورولاسیون اولیه و ثانویه وجود دارد. در نورولاسیون اولیه، قسمت عمده سیستم عصبی مرکزی از اکتودرم پشتی به وجود می آید
- ▶ نورولاسیون اولیه به ترتیب شامل مراحل صفحه عصبی (neural plate)، چین عصبی (neural fold) و لوله عصبی (neural tube) است
- ▶ به جنین در مرحله نورولاسیون، نورولا (neurula) گفته می شود
- ▶ مولکول های علامت دهنده که از نوتوکورد سر چشمه می گیرند نقش مهمی در القاء نورولاسیون اولیه دارند
- ▶ این مرحله در *Rana pipiens* و در دمای ۱۸ درجه سانتی گراد، ۵۰ ساعت پس از لقاح شروع می شود



From: <http://academic.emporia.edu/sievertg/tadpoles/devo.htm>

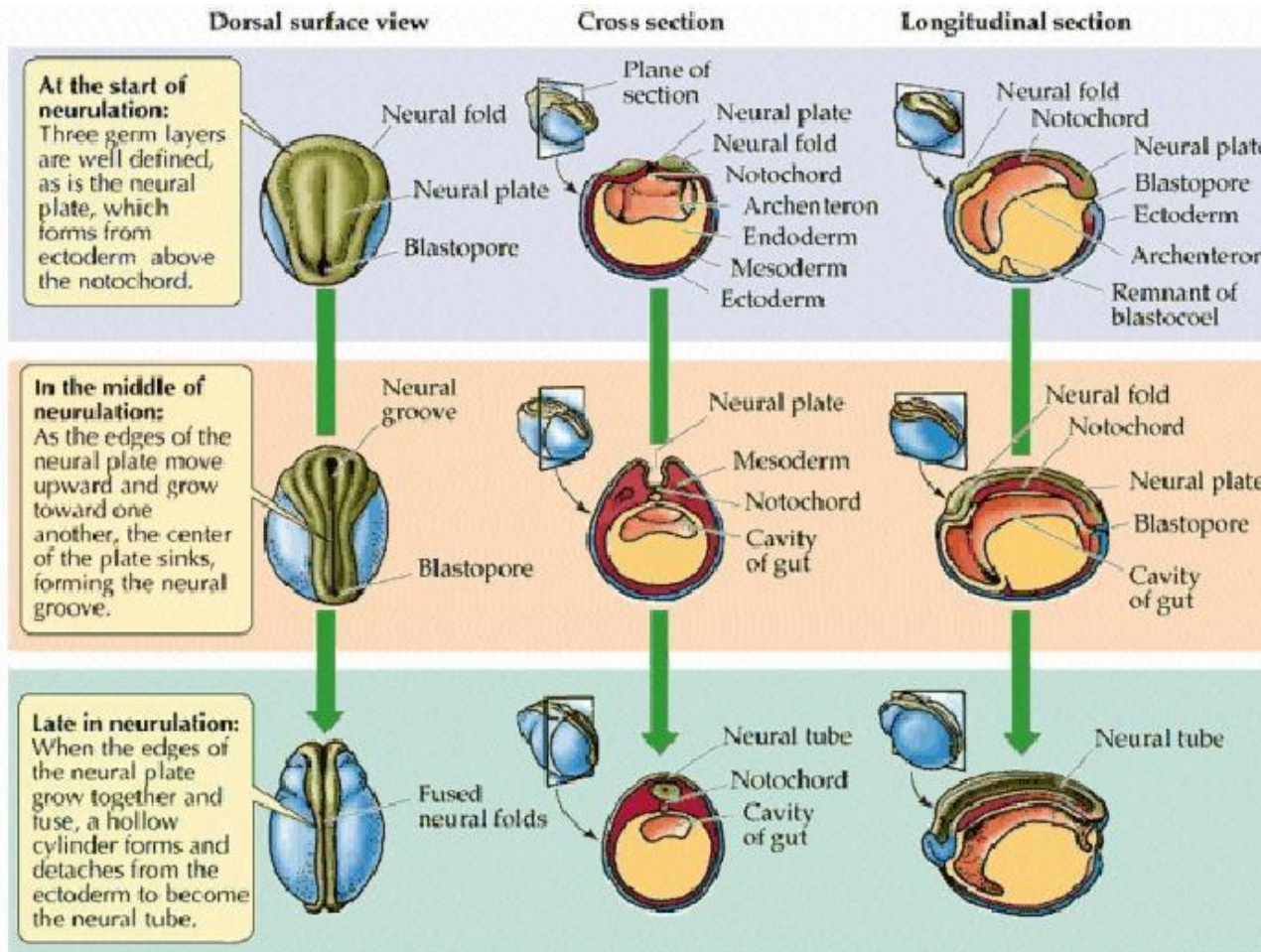
| STAGE NUMBER      |   | STAGE NUMBER      |  | STAGE NUMBER      |   |
|-------------------|---|-------------------|--|-------------------|---|
| AGE-HOURS AT 18°C |   | AGE-HOURS AT 18°C |  | AGE-HOURS AT 18°C |   |
| 1                 | 0   | 7                 | 7.5  | 13                | 50  |
|                   |    |                   |    |                   |    |
|                   | UNFERTILIZED  |                   | 32-CELL  |                   | NEURAL PLATE  |
| 2                 | 1   | 8                 | 16   | 14                | 62  |
|                   |    |                   |    |                   |    |
|                   | GRAY CRESCENT   |                   | MID-CLEAVAGE   |                   | NEURAL FOLDS  |
| 3                 | 3.5   | 9                 | 21   | 15                | 67  |
|                   |    |                   |    |                   |    |
|                   | TWO-CELL  |                   | LATE CLEAVAGE  |                   | ROTATION  |
| 4                 | 4.5   | 10                | 26   | 16                | 72  |
|                   |    |                   |    |                   |   |
|                   | FOUR-CELL   |                   | DORSAL LIP   |                   | NEURAL TUBE   |
| 5                 | 5.7   | 11                | 34   | 17                | 84  |
|                   |  |                   |  |                   |   |
|                   | EIGHT-CELL  |                   | MID-GASTRULA   |                   |  |
| 6                 | 6.5   | 12                | 42   |                   | TAIL BUD  |
|                   |  |                   |  |                   |   |
|                   | SIXTEEN-CELL  |                   | LATE GASTRULA  |                   |   |



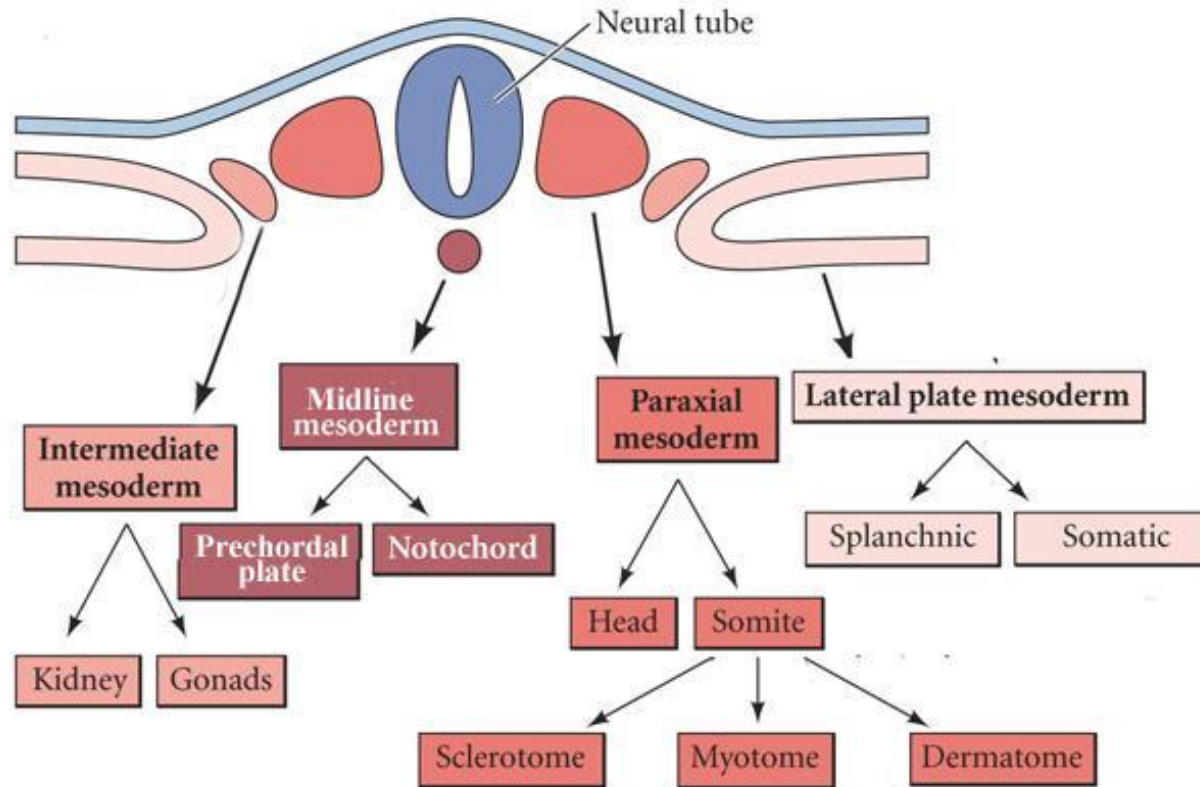


From: <http://ib.bioninja.com.au/options/option-a-neurobiology-and/a1-neural-develop>





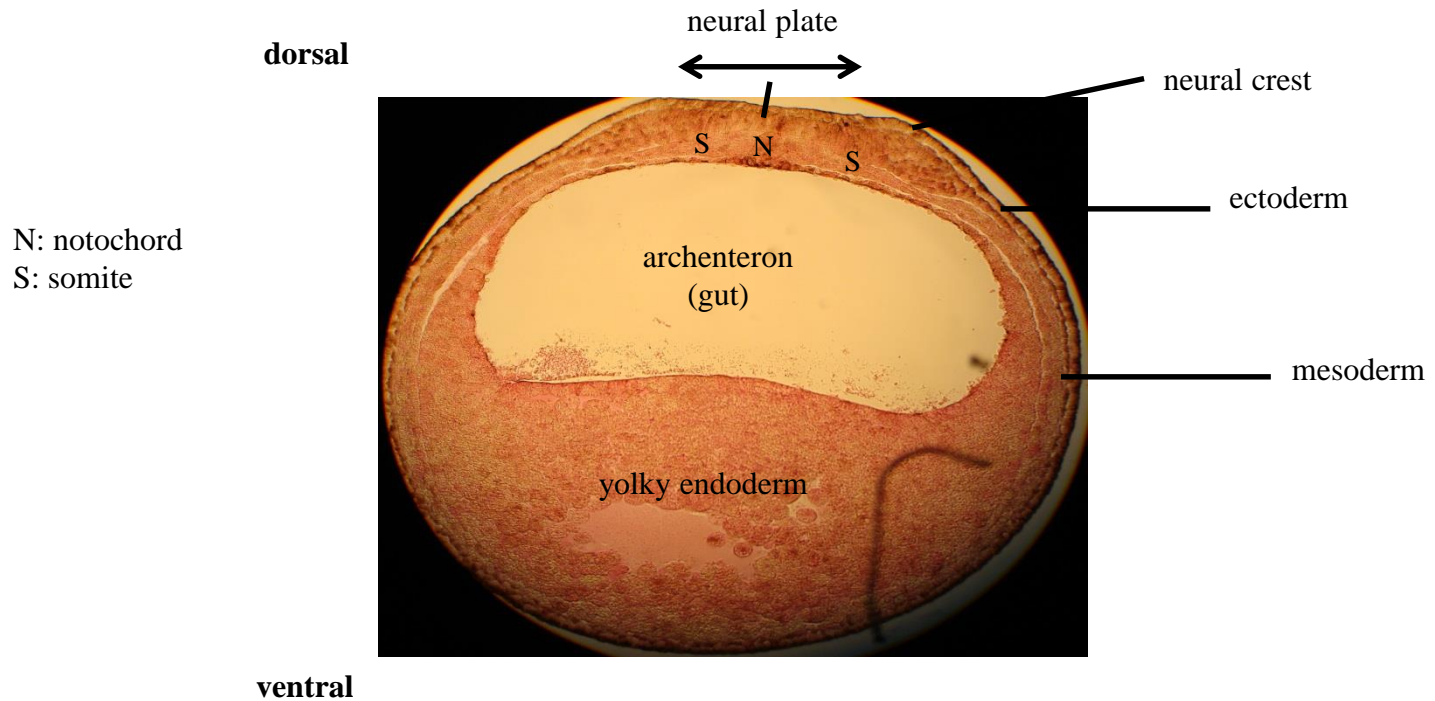
[http://biology.kenyon.edu/courses/biol114/Chap14/Chapter\\_14.html](http://biology.kenyon.edu/courses/biol114/Chap14/Chapter_14.html)



From: Developmental Biology, Gilbert, 2018

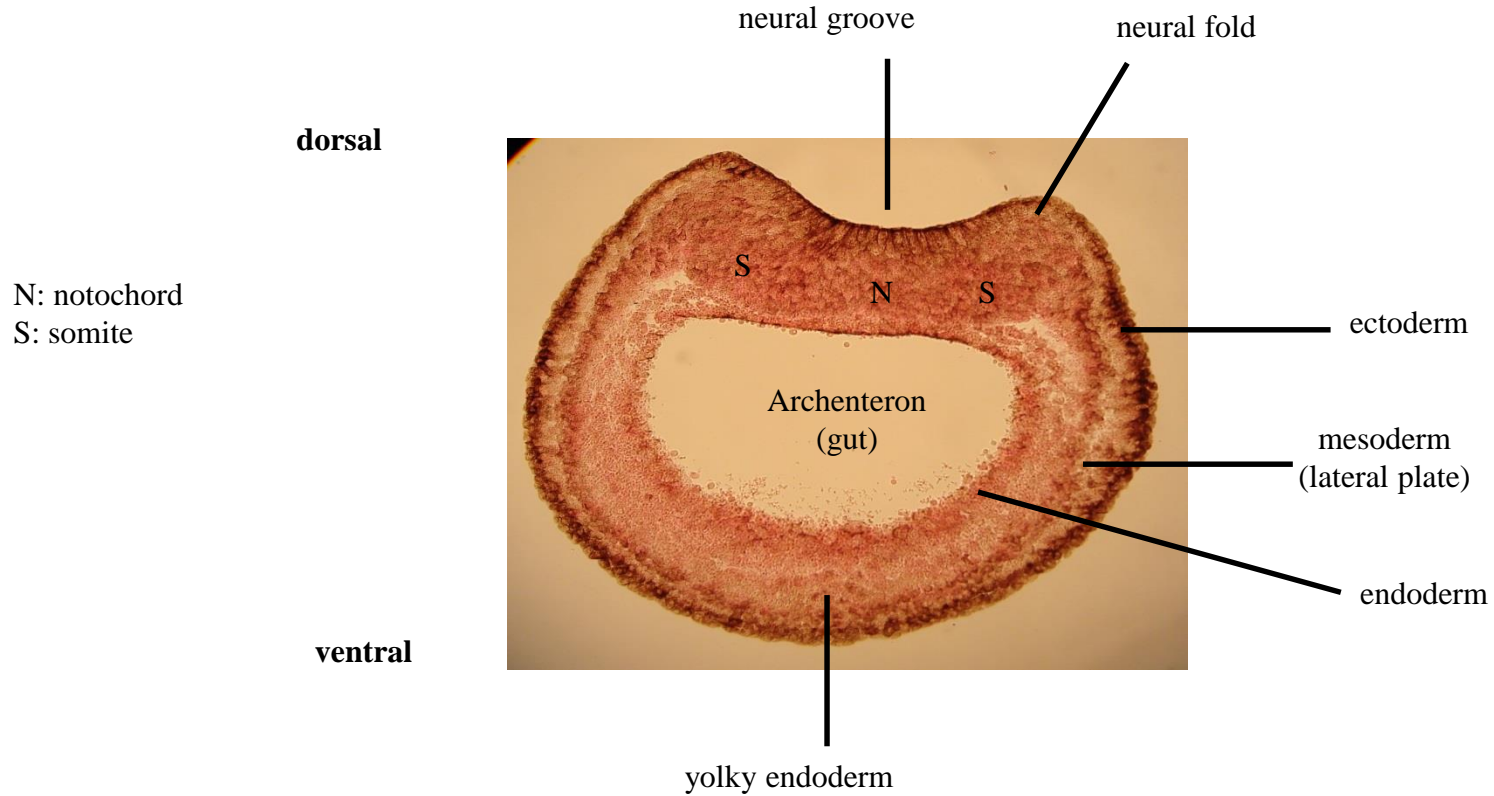


## Fog embryo: neural plate stage





## Frog embryo: neural fold stage

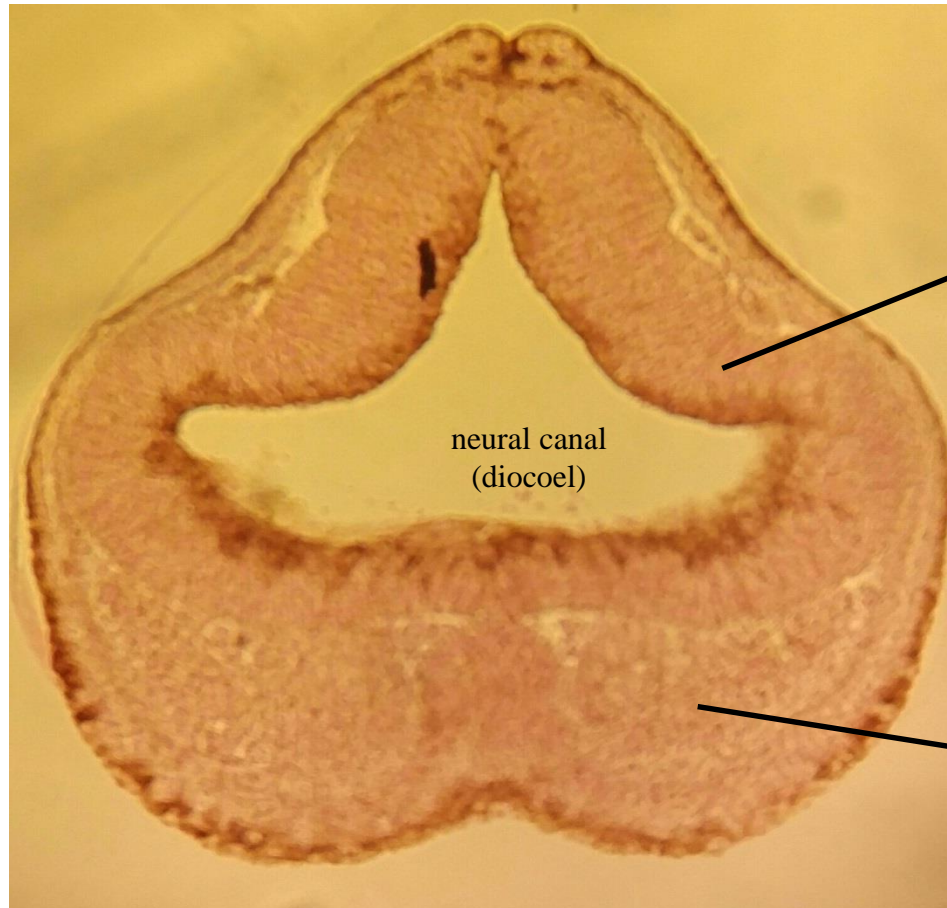






## Frog embryo: neural tube stage

dorsal



neural tube  
(diencephalon)

neural canal  
(diocoel)

ectoderm

head mesenchyme

ventral



# Frog embryo: neural tube stage

